



Overhead view of our main facility

Machinery
Dealers
You Can
Trust



WWW.
mdna.
org

Gallery Of Machines is a member of the Machinery Dealers National Association (MDNA), an organization which maintains a code of ethics among its members assuring their customers a high degree of integrity, reliability and technical expertise.



Cincinnati Centerless Grinder Re-Manufacture

Gallery of Machines

Machine Tool Specialists

**New Tolerances,
Half the Cost,
Get a Rebuild Quote
Today!**

607-849-6028

Gallery Of Machines LLC

20 Front Street
PO Box 460
Marathon, NY 13803

Phone: 607-849-6028

Fax: 607-849-6000

Website: GalleryOfMachines.com

Precision Machine Tool Rebuilding & Retrofitting

Gallery Of Machines is a precision machine tool rebuilder that has been in the machine tool rebuilding business for over twenty-eight years. Quality machine tool rebuilding, retrofitting, remanufacturing, new machine design and manufacture are just a few of the services offered. We have the capability and experience to provide our customers with complete in-house facilities. Many of our projects have included machine modifications and the designing of new machines to fit our customers needs.

Our twenty-eight years of buying, selling, and rebuilding machine tools have taught us that American made machines are by far the best in the world. In particular, the cast iron is harder and has better wear characteristics than European or Asian iron. Additionally, American engineered machine tools are designed to last twenty to thirty years and beyond, whereas imported machines are made to last a minimal amount of time. Because of this quality new American made machines have become unaffordable. For those people who know quality and demand the best the most economical means of obtaining that end is to rebuild an older American made machine tool. *Gallery Of Machines* can rebuild your machines to better than new tolerances for a fraction of the cost of a new one.

YOUR MACHINE TOOLS NEW AGAIN!!!!

**Rebuilding Machines
Tools To Their Original
Efficiency And Accuracy!!!**

Since opening our doors in 1979, we have performed hundreds of rebuilds & retrofits assembling a group of machine tool technicians with over 80 years of combined experience in the total remanufacture and retrofit of machine tools. Our machinists regularly make acme screws & nuts, spur gears, cluster gears, and other machine parts. We have our own in-house pattern shop, a complete fabrication shop with TIG, MIG, and stick welding capability, along with sandblasting & painting facilities. We do our own software design including computer generated prints and documentation.



No. 11 Blanchard Before Re-Manufacture



Finished No.11 Blanchard with 2-Axis Fagor CNC Control and full enclosure



Niagara Falls/Fagor CNC Creep Feed Grinder

We invite you to visit our facility and inspect our rebuilding processes. If you have any questions please feel free to contact us.

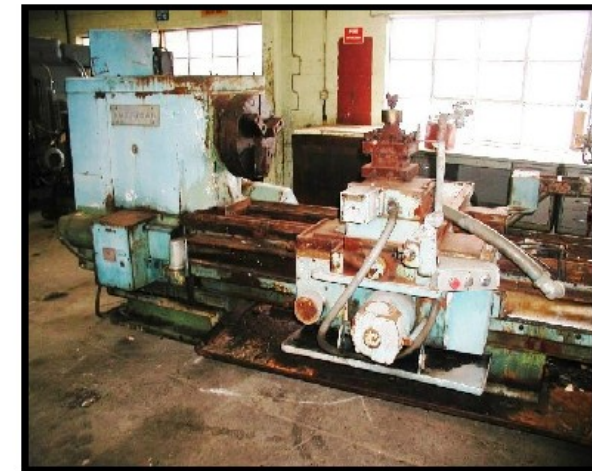
REBUILDING & RETROFITTING : The major portion of our personnel are now involved in rebuilding machine tools to new tolerances for some of the larger corporations in New York, Pennsylvania, and much of New England . We have also engineered the installation of CNC controls on a number of machines including Blanchard rotary grinders, Elb surface grinders, and a 32" x 120" Monarch lathe. Our 5' x 5' x 20' Gray way grinder is holding .0001 per foot. This gives us the capacity to rebuild Bullard VTL'S, horizontal & vertical boring mills and DeVlieg Jigmils.



Stacy-Fitchburg Miller Re-Manufactured

Rebuilt: The ways will be re-ground to new tolerances and mating parts hand scraped to fit with proper bearing quality. The machine will be guaranteed to hold new tolerances. Gearboxes, spindles, hydraulic components are not included in a rebuild unless specified. Guaranteed one year!

Re-manufactured: The machine is 100% disassembled, stripped to bare metal, painted to factory quality. All ways are re-ground to new tolerances and mating parts are hand scraped to fit with proper bearing quality. All bearings, seals, feed screws and nuts, and other parts showing appreciable wear are replaced. Guaranteed one year except electrical and spindle bearings which are 60 days due to factors which are typically beyond our control.



American Lathe Before Re-Manufacture



Finished Re-Manufacture with 2-Axis GE FANUC Control and custom follow rest.



Morando VBM Rebuild & Retrofit